

**Christ Church**  
Second Sunday in Lent  
March 4, 2012

Worship at 9:30 and 11:15 am

***No matter who you are, or where you are on  
life's journey, you're welcome here!***

**Order of Worship**

9:30 a.m. – Second Sunday in Lent

Prelude     ***Chorale Prelude on 'Now Thank We All Our God'***  
S. Karg-Elert

Introit             ***Si Iniquitates Obervaveris***             Samuel Wesley  
Men's Chorus

Ringing of the Church Bell

Hymn # 210             ***O God Our Help in Ages Past***             ST ANNE

Call to Worship                                                             Rick Morey

Leader: O God, lead us from death to life,

**People: From falsehood to truth.**

Leader: Lead us from despair to hope,

**People: From fear to trust.**

Leader: Lead us from hate to love,

**People: From war to peace.**

Leader: Let peace fill our hearts,

**People: Our world, our universe.**

**All: We ask it for your own name's sake.**

Prayer of Invocation

Rick Morey

Scripture Reading

Ezekiel 18:1-9

John Vigilante

Musical Offering

***God Help the Outcasts***

Alan Menken

Leah Green

A Story for Children

Penny Vigilante

(The 2 and 3-year-olds may leave for Sunday school at this time.

Church Mice Choir for children pre-K through 1st grade  
may leave at this time.)

Service of Baptism for Anna Dixon Parcels

Presented by

Liz and Matt Parcels

**We receive this child as a new person in Christ. We offer our understanding and support as she explores life. We enfold her in our love, seeking together to grow in wisdom and stature and in favor with God and all people. We join with Liz and Matt in telling the Gospel in our midst, so that their child and all children may live with us for Christ, showing forth his love for all people.**

Song of Dedication

***Anna, we greet you on this glad morning;  
We are so happy that you are here.  
Our fondest wishes go with you always:  
God guard and keep you all through the years.***

Hymn

### May You Run and Not Be Weary

*words and music by Paul Murakami and Handt Hanson*

May you run and not be wea - ry, may your  
heart be filled with song, and may the love of God con - tin -  
ue to give you hope and keep you strong, and may you  
run and not be wea - ry, may your life be filled with joy,  
and may the road you tra - vel al - ways lead you home.

Passing of the Peace

SOS Moment

Kathy O'Leary  
IRATE/First Friends

Announcements, Joys and Concerns

Rev. Charles Rush

Silence & Prayer

Invitation to Sharing

Offertory Anthem ***Standing in the Need of Prayer***

Men's Chorus African American Spiritual

Doxology

OLD 100TH

Praise God from whom all blessings flow;  
Sing praise, all creatures here below.  
Praise God above, ye heavenly hosts;  
Creator, Christ and Holy Ghost. Amen.

(Children Pre-K through 5<sup>th</sup> grade may leave for  
Sunday school at this time.)

Scripture Reading

John I

Rev. Charles Rush

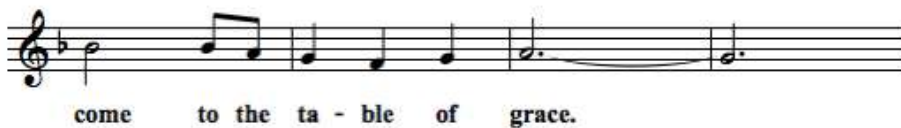
Sermon

**"The Darkness Has Not Overcome It"**

Rev. Rush

Communion Hymn

***Come to the Table of Grace***



peace  
hope  
love  
joy

Service of Holy Communion

Benediction

Rev. Rush

Postlude

***Fugue in a minor***

J.S. Bach

Acolyte for 9:30 am:

Greeters: George Ross and John Vigilante

Ushers for 9:30 am: Chuck and Marin Mixon

**Welcome! Visiting today? Please complete a Visitor Card and drop into the offering plate and join us for fellowship after today's service.**

The **third white candle** on the altar is lit in hope of world peace.

## **ANNOUNCEMENTS**

Here is today's **Sunday school** schedule:

2-3 year olds	Room B-202
Pre-K & K	Room B-205
1st graders	The Welcome Table (Kitchen B-119)
2nd graders	Prophet's Playhouse (Media Room)
3rd graders	Creation Corner (Art Room)
4th graders	Bible Times Live (B-204)
5th graders	Good News Games (B-214)
6th thru 12th graders	Stay in Worship

**Adult Education Today:** IRATE/First Friends of NJ and NY is an organization with a mission to treat immigrants with dignity and compassion. It provides non-legal assistance for immigrants held in detention in New Jersey, and also advocates for immigrant rights, specifically the end of mass detention. The Board of World Fellowship has granted funding to IRATE/First Friends in recent years. At this morning's Education Hour in **Barnwell Hall**, Kathy O'Leary will give a presentation on IRATE/First Friends, along with a detainee who will accompany her. The program will begin at **10:45 AM**.

**Board of World Fellowship:** At Christ Church, SOS means Sundays of Sharing, a few Sundays during Lent when the Board of World Fellowship (BWF) asks the congregation to consider making a special gift for outreach. SOS funds are used by BWF to supplement money it receives from the Christ Church budget. Unlike budgeted funds, SOS moneys can be carried over each year, so some is set aside so Christ Church can respond to emergencies, while some money is used to support non-profit organizations that strive to make a positive difference in areas bowed down by poverty, war and injustice. You will find a bulletin board in the hallway leading to the sanctuary where you will find updated information on BWF activities.

Please contact BWF if you want more information about outreach at Christ Church. And please consider giving generously to SOS this season.

### **Quest Meetings in March:**

**Evening Quest** meets on this **Tuesday, March 6th at 7:30pm** at Laurie Rufolo's house. Join us for a discussion on a chapter from Rob Bell's book "Love Wins" (There are copies in the atrium by the office). If you haven't read the chapter you are still welcome!

**Morning Quest** meets on **Monday, March 12th at 9:30am**

We are watching a movie clip and discussing it together.

**Lenten Lunches** will be held every Tuesday in March at noon.

Join us for prayer, reflection, communion and a soup lunch.

### **"Age-ing and Sage-ing" - New Christ Church Small Group Opportunity:**

Are you interested in practices of positive aging and finding meaning in the 2nd half of life? The spirituality of "age-ing and sage-ing?"

Join Leigh Rosoff and Caroline Dean on **Sunday, March 11<sup>th</sup>** during coffee hour (10:45-11:45am) in Barnwell Hall to explore this small group opportunity at Christ Church. Email cdean@ccsnj.org if you would like to get more information.

**Service of Healing and Prayer:** On Wednesday **March 14<sup>th</sup> at 8pm** we will have a Service of Healing and Prayer. Join us for a time of prayer for those who are in need of healing in our community and in other circles. We will anoint those who are ill or know of others who are in need of prayer.

**Meet Up:** Our next **Meet Up** will be family friendly ice skating on **Sunday, March 18<sup>th</sup>** from 2:00-3:30 pm at the Codey Arena in West Orange, NJ. Cost is \$5 per person and skates are an extra \$3. To RSVP email cdean@ccsnj.org

**The 3rd Annual Chili Cook Off & Square Dance** will be on **Saturday March 24<sup>th</sup>**. Mark your calendars! Email Marilyn Devroye at mptd@msn.com to sign up to participate as a cook or just to eat/judge.  
Chili Tasting / Judging - 6:00pm-7:00pm  
Square Dancing - 7:15pm-9:00pm (with live music!)

COST: (all funds support service projects in Nicaragua)  
\$35 per cook  
\$40 per family  
\$20 per individual

**There will be a “New Member Sunday” on March 25<sup>th</sup> at the 9:30 service.** If you are interested in joining the church or have questions, please speak to Chuck, Julie or contact Carol Angle, Welcoming Committee, at 918-1005 or jerseyangle@aol.com.

**Get your picture in the photo directory on the church website** – If you haven't already done this, now is your opportunity! We will be taking photographs for the church directory on March 25<sup>th</sup> at coffee hour in the atrium.

**Heirloom / Personal History Exhibit:** Please consider submitting a personally significant object, heirloom, or piece of ephemera to an upcoming exhibit in Christ Church's Grace Chapel.

Objects of all size, shape and value are welcome, and will be returned after the show, which will run from April 15 to 29<sup>th</sup>. Participants are encouraged to email short summaries of their object's history or significance to eloughlin@gm.slc.edu . These summaries will be included with the objects, which will be collected in coffee hour on March 25, April 2 and April 9.

We are also looking for volunteers to assist in the transformation of Grace Chapel into a gallery space. We will need assistance in transporting very large, heavy cases from their location in New Providence to the Church. We will also be painting and refurbishing glass cases on Saturday, March 17. Please email eloughlin@gm.slc.edu if you are interested in helping.

**Office and craft supplies for Nicaragua:** Thinking ahead to the PeaceWorks container shipment to Nicaragua, please check at home to see if you have any of the following items lying around unused: Plain white copy paper, construction paper, tape, pens, colored pencils, colored markers, fabric remnants, ribbons, glue. Any of these would be welcome donations to the shipment. Inhijambia uses them to teach fine-motor skills through crafts projects. Most street children in Nicaragua dropped out of school before learning such simple skills as coloring or using scissors. At Inhijambia they engage in accelerated catch-up, so supplies are always in high demand. Loading day for the PeaceWorks container shipment is Saturday, May 5, but early donations are welcome. To coordinate a drop-off or pickup, please contact Marilyn Devroye mptd@msn.com 908-522-1072; or Dan Ocone ocone@math.rutgers.edu 908-273-0968. Tax receipt available!

\*\*\*\*\*

***New Prayer Concerns and Joys:** We take joy in Richard Avery's recovery from knee surgery, and Patsy Hammond's hearing improvement.*

<b>Sunday January 29, 2012</b>	Choir Practice – Sanctuary	8:45 am
	First Worship Service	9:30 am
	Church Mice – Barnwell Hall	9:45 am
	Coffee Hour – Barnwell Hall	10:30 am
	Genesis Choir - Sanctuary	10:45 am
	Canticle Singers – Lile Hall	11:00 am
	High School Youth Choir	11:15 am
<b>Fourth Sunday after Epiphany</b>	Second Worship Service	11:15 am
	No Youth Group	

### Calendar of Upcoming Events

#### March 2012

Sat-Sun, Mar 3-4	Women's Retreat	Mendham
Tue, Mar 6	Lenten Lunch at Noon	Lile Hall
	Board of World Fellowship meeting	Lile Hall
Sat, Mar 10	Meditation Group, 9 am	Grace Chapel
Mon, Mar 12	Deacons Meeting, 7 pm	Acker Conference Room
Tue, Mar 13	Lenten Lunch at Noon	Lile Hall
	Property Managers Meeting, 7:30 pm	Acker Conference Room
Sat, Mar 17	Meditation Group, 9 am	Grace Chapel
Tue, Mar 20	Lenten Lunch at Noon	Lile Hall
	Executive Board Meeting, 8 pm	Acker Conference Room
Sat, Mar 24	Meditation Group, 9 am	Grace Chapel
	<b>American Roots</b> evening with Chili	Barnwell Hall
	Cook-off and Square Dance, 6-9:30 pm	
Sun, Mar 25	New Member Sunday	
	Photos taken for Directory	Coffee Hour
Tue, Mar 27	Lenten Lunch at Noon	Lile Hall
Sat, Mar 31	Meditation Group, 9 am	Grace Chapel

*For updates or additions to calendar, please email Julia O'Brien at [jaywob@gmail.com](mailto:jaywob@gmail.com)*

### Christ Church, Summit

An Open and Affirming Congregation  
 An interdenominational fellowship affiliated with  
 The United Church of Christ  
 and American Baptist Churches, USA  
 561 Springfield Avenue, Summit, NJ 07901  
 Telephone: 908-273-5549 Fax: (call)  
[www.ChristChurchSummit.org](http://www.ChristChurchSummit.org)

Ministers – All Members of Christ Church  
 Senior Minister – The Rev. Dr. Charles T. Rush  
 Associate Minister – The Rev. Julie Yarborough  
 Associate Minister – The Rev. Caroline Dean  
 Minister of Music – Mark Miller  
 Children's Choirs Director – Alison Vidal Caravano  
 Second Service Pianist – Daniel Ruffolo  
 Organ Scholar & Music Intern - Nicholas Mitchell Garcia  
 Office Manager – Cheryl Levy  
 Housekeeping – Juan and Rocio Restrepo